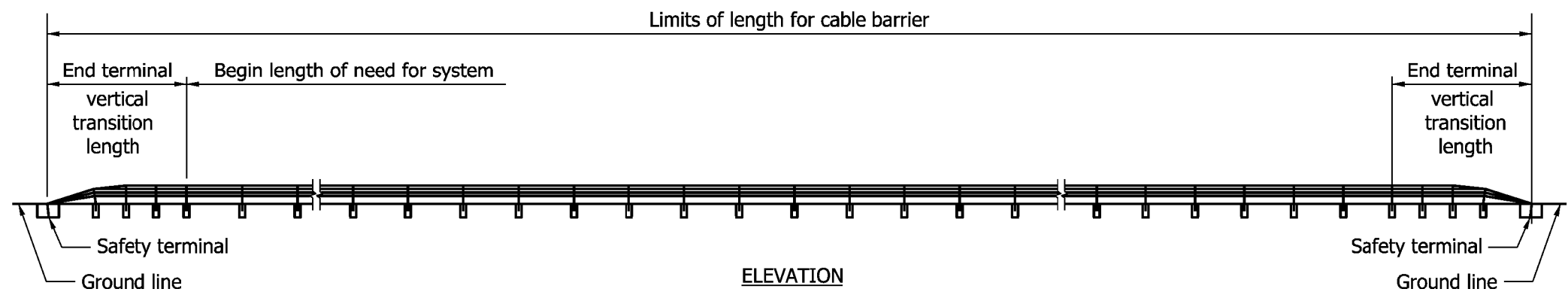
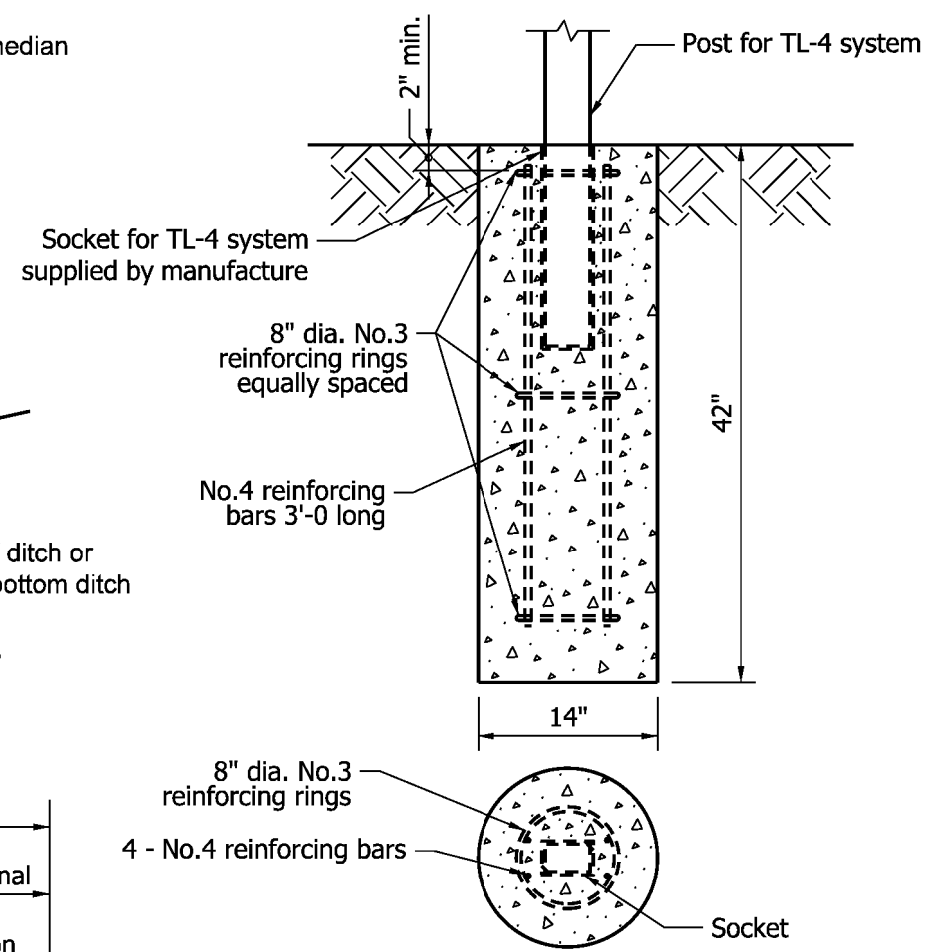


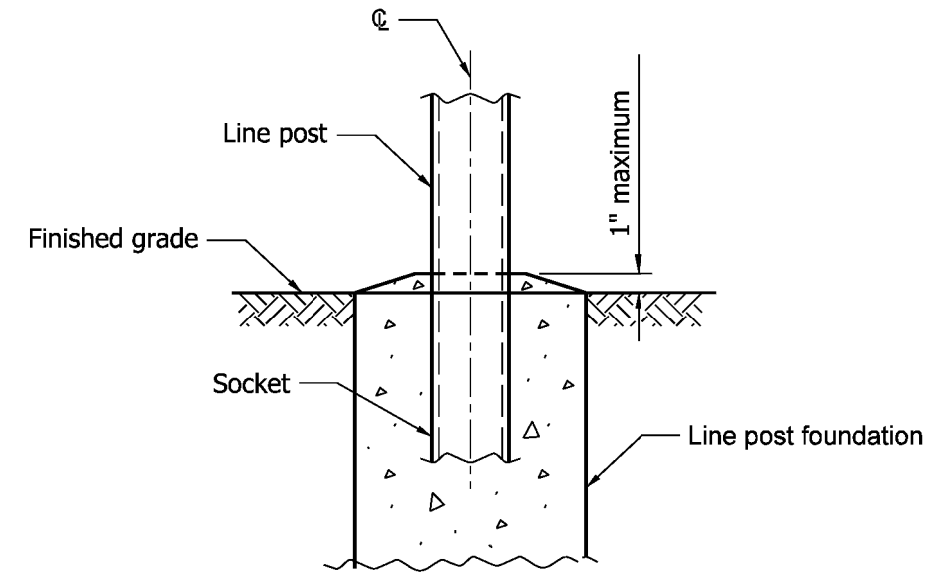
ELEVATION
LOCATION OF CBS IN MEDIAN



ELEVATION
TYPICAL CBS LAYOUT



DETAIL B
MINIMUM SIZE AND MINIMUM REQUIRED REINFORCEMENT FOR LINE POST FOUNDATION FOR CBS TL-4 SYSTEM



DETAIL A

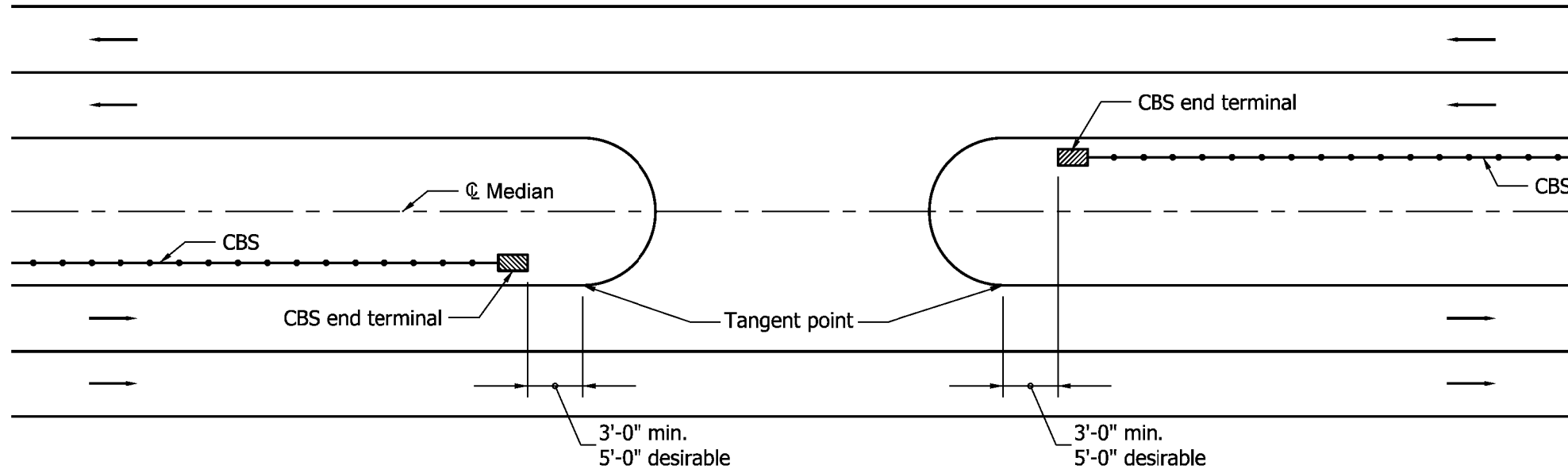
- NOTES:**
1. CBS: cable Barrier System.
 2. Cable barrier placement detail shown on this drawing is applicable to median with a maximum paved shoulder width of 4 ft. and the following median widths:
 - a. A minimum median width of 48 ft. for a V ditch
 - b. A minimum median width of 52 ft. for a 4 ft. wide flat bottom ditch.
 3. CBS horizontal alignment transitions shall be made on a 50:1 or flatter taper.

INDIANA DEPARTMENT OF TRANSPORTATION

LOCATION OF CBS IN MEDIAN

NOTES

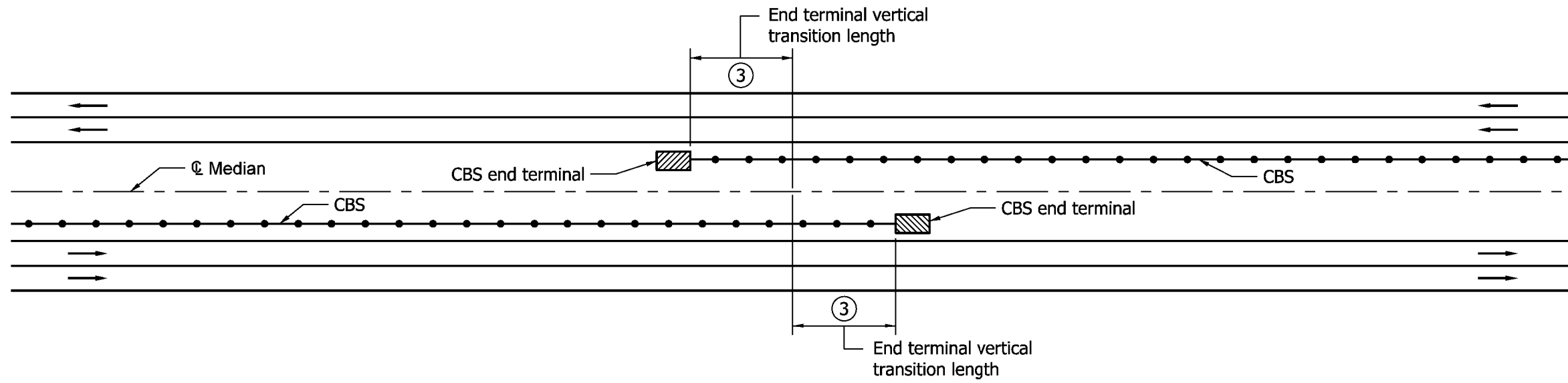
- 1. CBS: cable Barrier System.
- 2. For location of CBS, see sheet 1 of 9.



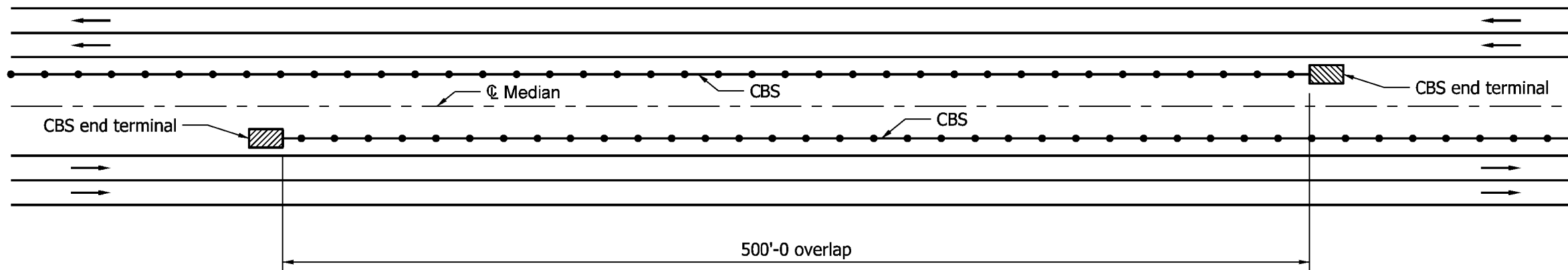
LOCATION OF CBS END TERMINAL AT MEDIAN CROSSOVER

INDIANA DEPARTMENT OF TRANSPORTATION

LOCATION OF CBS END TERMINAL
AT MEDIAN CROSSOVER



CHANGING LOCATION OF CBS TRAFFIC SIDE TO OPPOSITE SIDE OF MEDIAN (DESIRABLE)



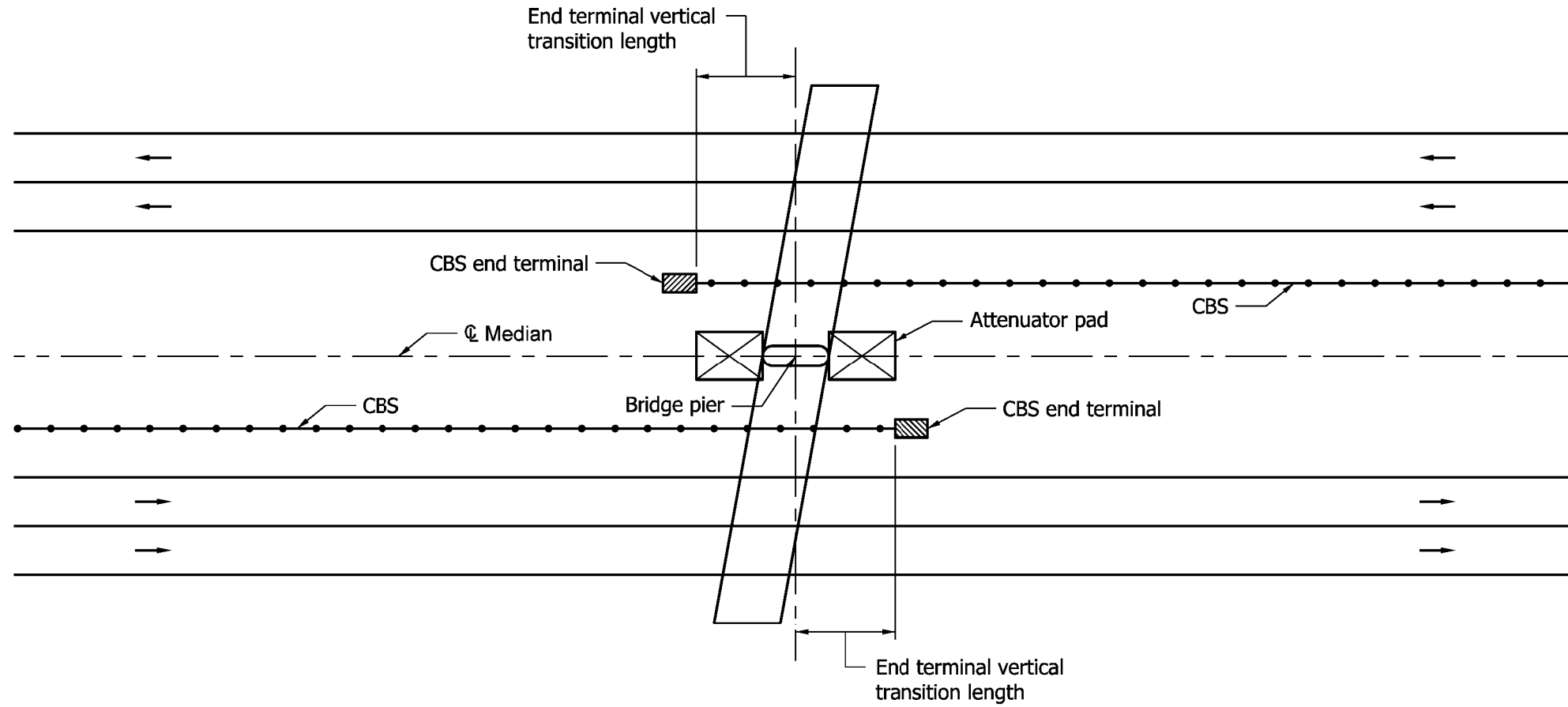
CHANGING LOCATION OF CBS TRAFFIC SIDE TO OPPOSITE SIDE OF MEDIAN TO NEAR TRAFFIC SIDE

NOTES

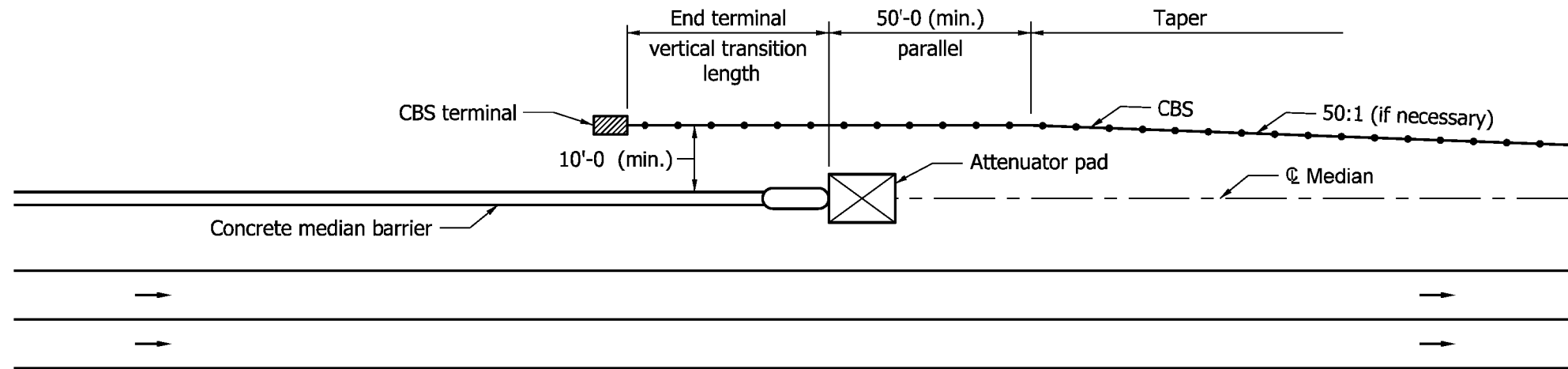
1. CBS: cable Barrier System.
2. For location of CBS, see sheet 1 of 9.
- ③ This distance shall be 0 ft when specified on plan where there is no access point within 10,000 ft for emergency crossover.

INDIANA DEPARTMENT OF TRANSPORTATION

CHANGING LOCATION OF CBS TRAFFIC SIDE TO OPPOSITE SIDE OF MEDIAN



CBS AT MEDIAN BRIDGE PIER WITH ATTENUATOR



CBS AT CONCRETE MEDIAN BARRIER WITH ATTENUATOR

NOTES

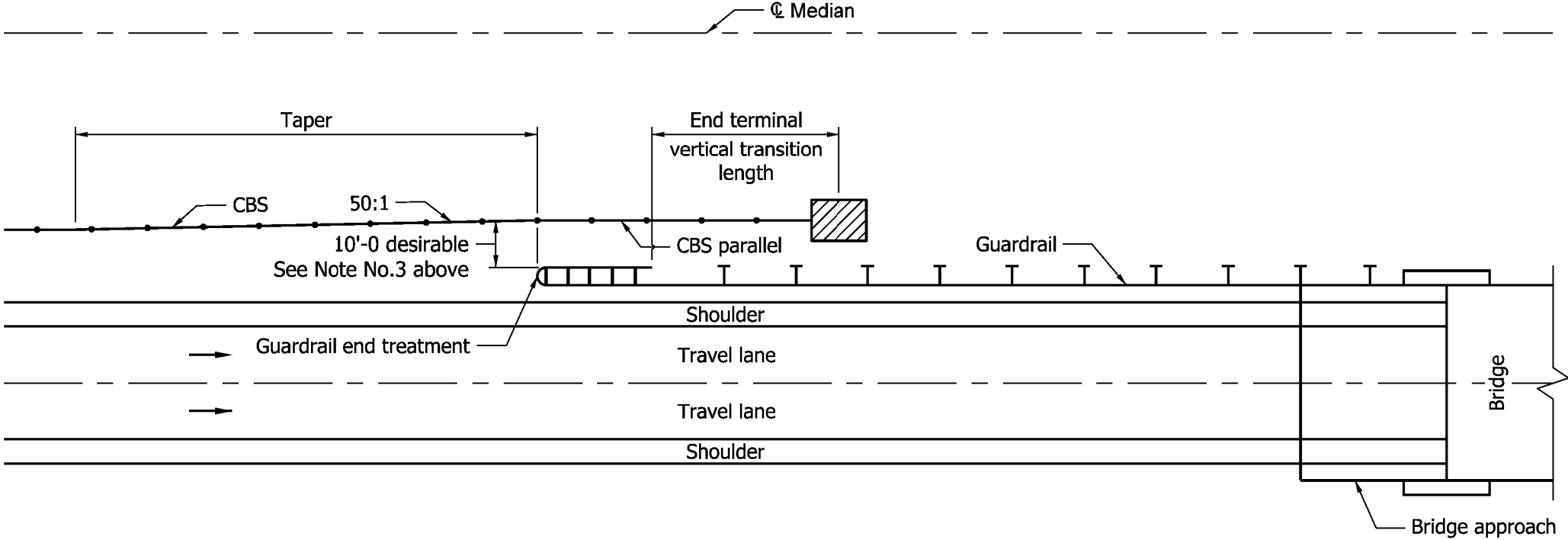
1. CBS: cable Barrier System.
2. For location of CBS, see sheet 1 of 9.

INDIANA DEPARTMENT OF TRANSPORTATION

CBS AT MEDIAN BRIDGE PIER

Notes:

- 1. CBS: Cable Barrier System.
- 2. For location of CBS, see sheet 1 of 9.
- 3. Adjust as necessary to maintain 8'-0" minimum from ditch as shown on sheet 1 of 9.



CBS INCOMING END OF BRIDGE IN MEDIAN

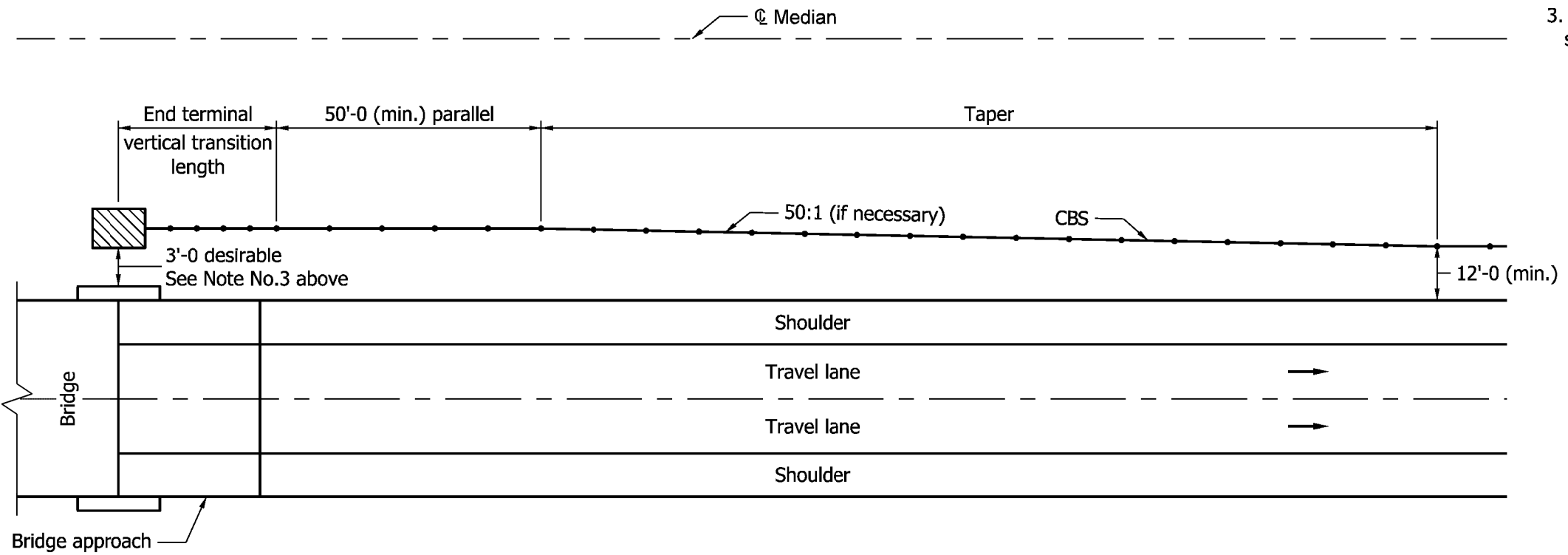
E 627-R-546d 5 of 9

INDIANA DEPARTMENT OF TRANSPORTATION
CBS INCOMING END OF BRIDGE IN MEDIAN

05-01-11

Notes:

- 1. CBS: Cable Barrier System.
- 2. For location of CBS, see sheet 1 of 9.
- 3. Adjust as necessary to maintain 8'-0" minimum from ditch as shown on sheet 1 of 9.

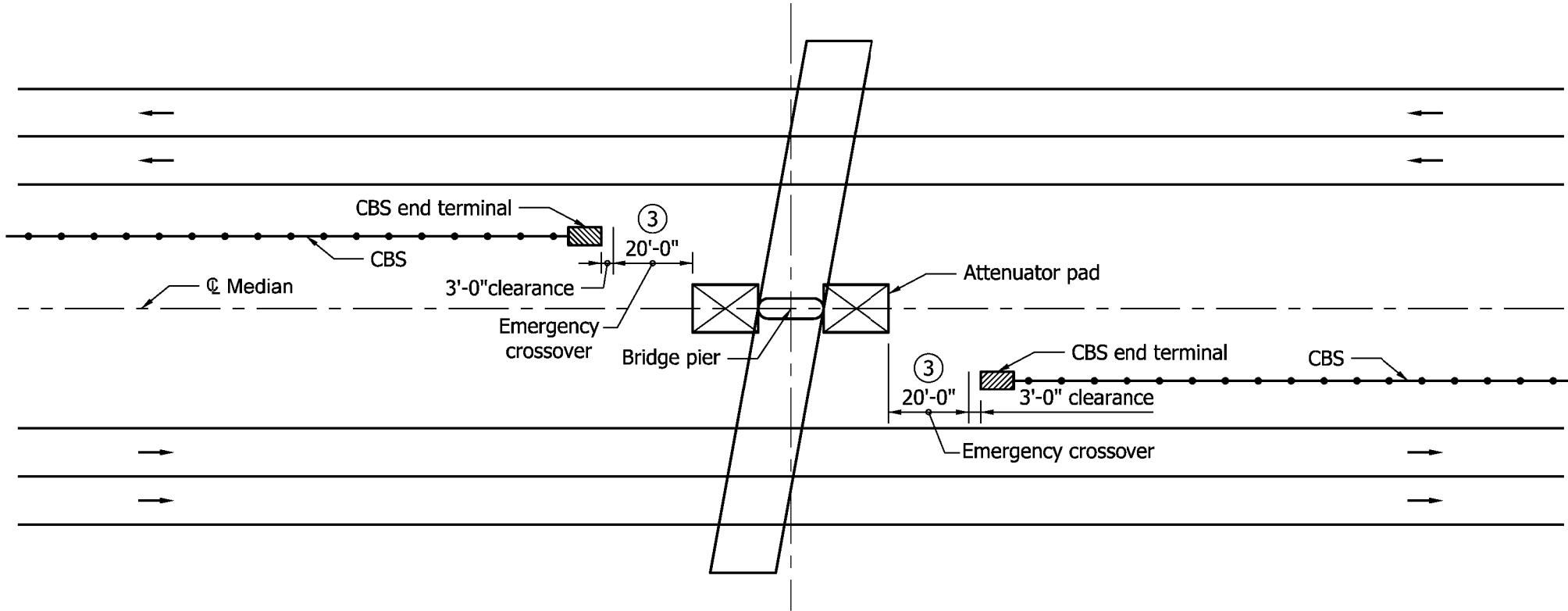


CBS OUTGOING END OF BRIDGE IN MEDIAN

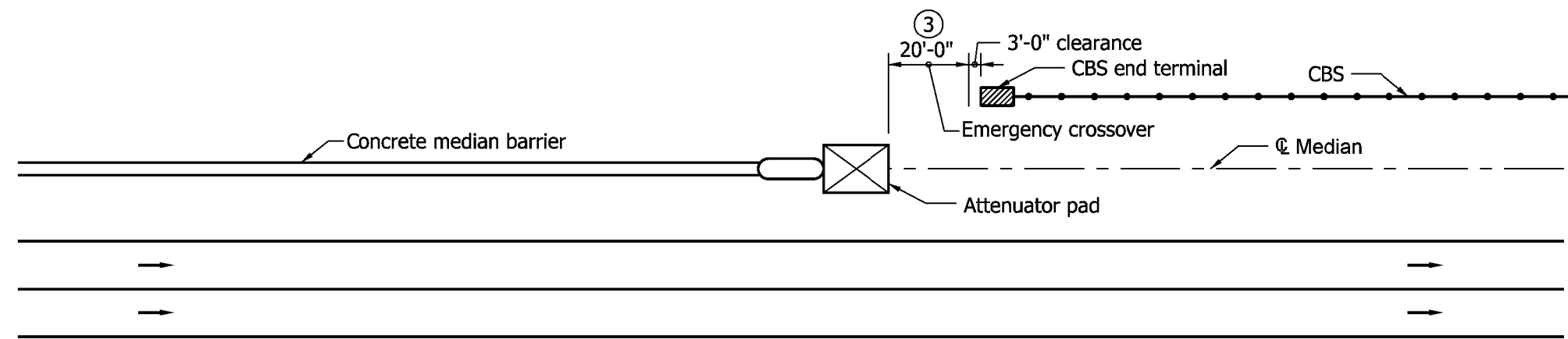
E 627-R-546d 6 of 9

INDIANA DEPARTMENT OF TRANSPORTATION
CBS OUTGOING END OF BRIDGE IN MEDIAN

05-01-11



CBS AT MEDIAN BRIDGE PIER WITH ATTENUATOR



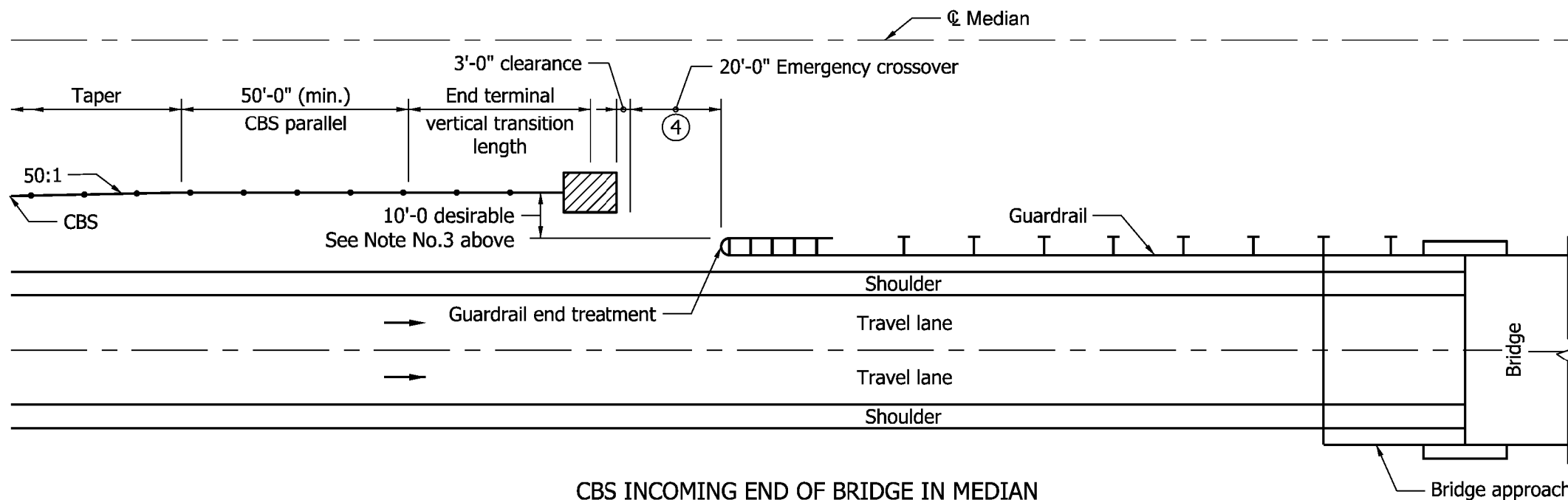
CBS AT CONCRETE MEDIAN BARRIER WITH ATTENUATOR

Notes:

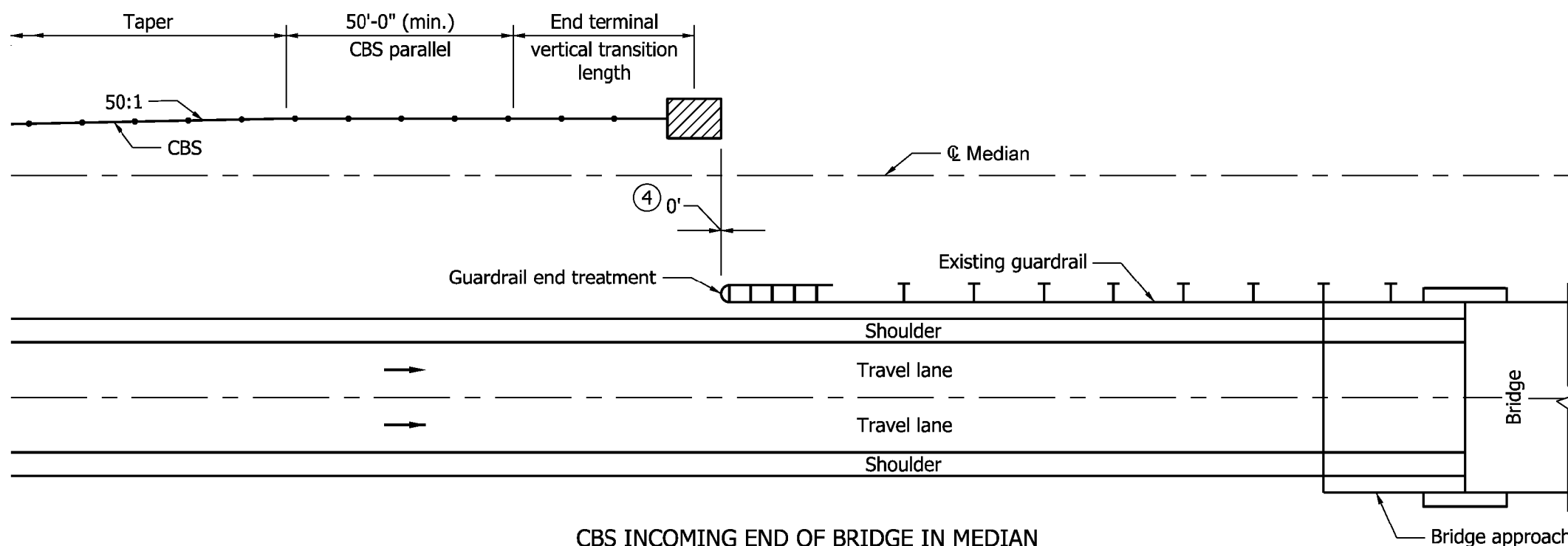
- 1. CBS: Cable Barrier System.
- 2. For location of CBS, See sheet 1 of 9.
- ③ See plans for location of emergency crossover and soil stabilization requirement.

INDIANA DEPARTMENT OF TRANSPORTATION

CBS AT MEDIAN BRIDGE PIER
EMERGENCY CROSSOVER



**CBS INCOMING END OF BRIDGE IN MEDIAN
CBS AND GUARDRAIL ON SAME SIDE OF MEDIAN**



**CBS INCOMING END OF BRIDGE IN MEDIAN
CBS AND GUARDRAIL ON OPPOSITE SIDE OF MEDIAN**

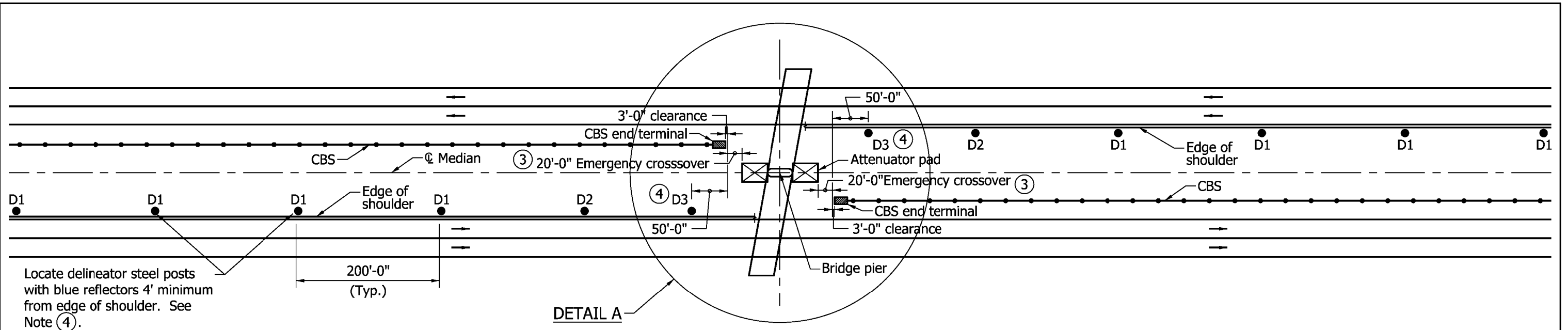
Notes:

1. CBS: Cable Barrier System.
2. For location of CBS, see sheet 1 of 9.
3. Adjust as necessary to maintain 8'-0" minimum from ditch as shown on sheet 1 of 9.
- ④ See plans for location of emergency crossover and soil stabilization requirement.

E 627-R-546d 8 of 9

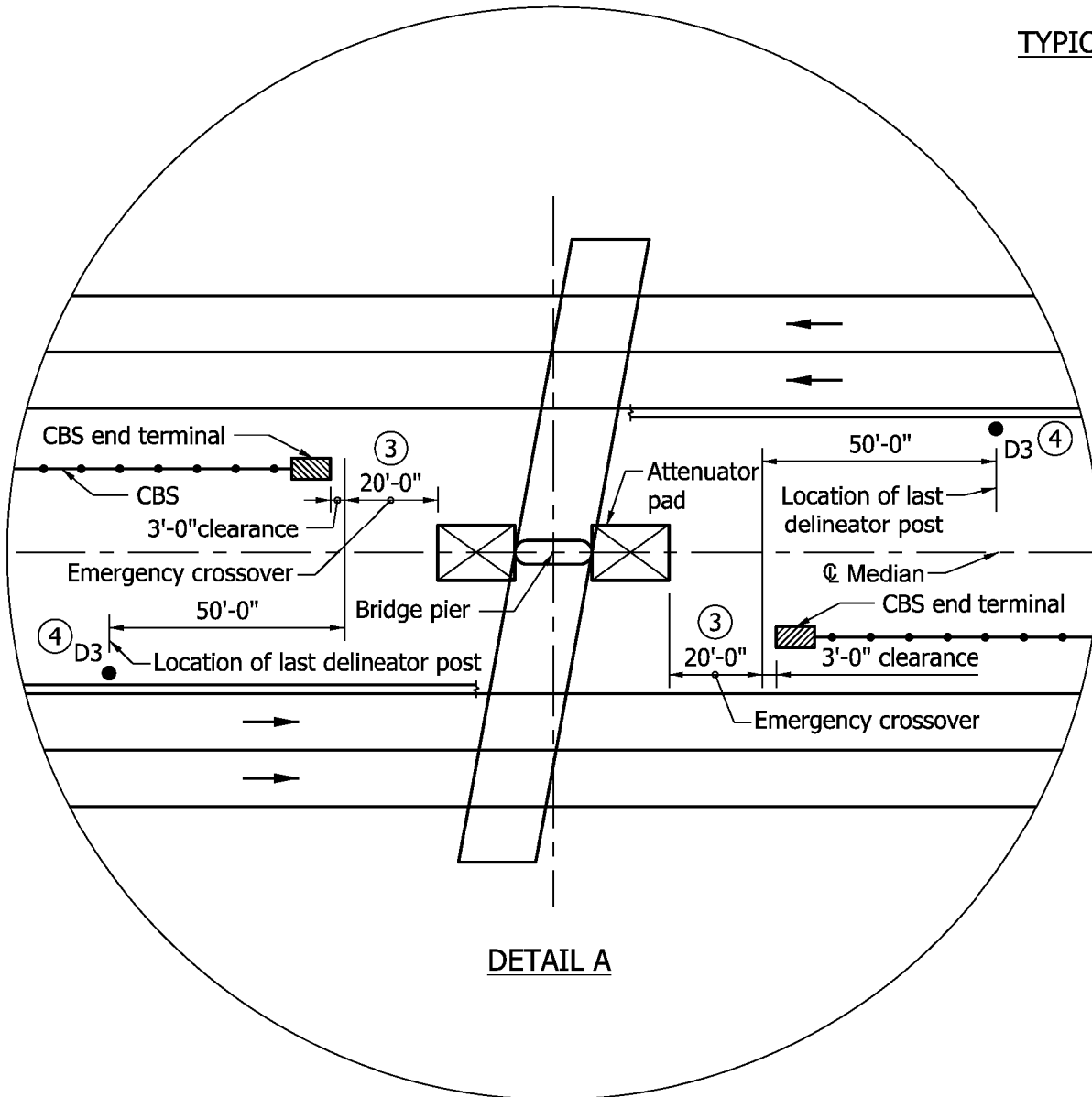
INDIANA DEPARTMENT OF TRANSPORTATION
CBS INCOMING END OF BRIDGE IN MEDIAN EMERGENCY CROSSOVER

05-01-11



DETAIL A

TYPICAL DETAIL FOR DELINEATOR POSTS AT EMERGENCY CROSSOVER



DETAIL A

Notes:

1. CBS: Cable Barrier System.
2. For location of CBS, See sheet 1 of 9.
- ③ Location of emergency crossover when specified on plans.
- ④ Delineator post D3 with reflectors blue at top, white in the middle and blue at bottom.

INDIANA DEPARTMENT OF TRANSPORTATION

TYPICAL DETAIL FOR DELINEATOR POSTS AT EMERGENCY CROSSOVER